

# SPINNERLESS PRODUCTION PROFILING

## HORIZONTAL OIL PRODUCERS

Array Spinnerless Production Profiling Technology is based on High Accuracy Array Temperature Tool with resolution of exposed to the environment six temperature probes of not less than 0.001 C and response time not less than 0.25 sec. Temperature Array Tool (TAT) allows to capture smallest reservoir-related disturbance of the temperature field inside the horizontal section of the well and construct a quantitative reservoir-related production profile.

### Technology application:

- 360° Spinnerless quantification of production profile in horizontal section of the well.
- Reservoir related production profile from six array high precision and fast response temperature probes.
- Applicable for cased hole, liner and open hole wells.

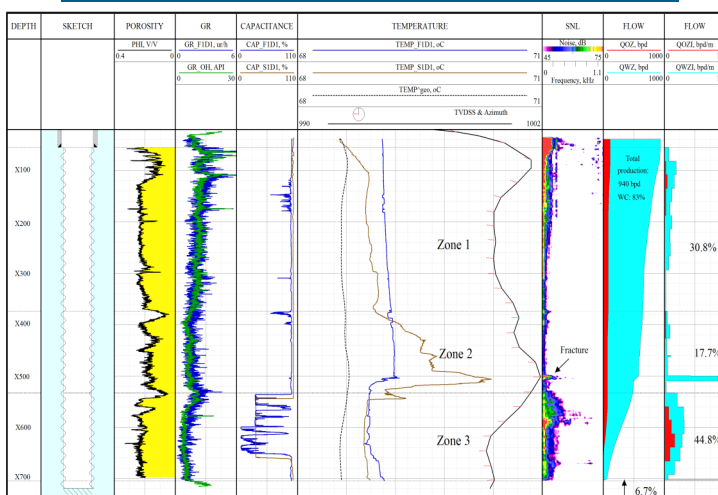
### Technology advantages:

- Data acquisition assurance since no rotating parts in toolstring.
- No limitation to the flow rate. Low rate wells application.
- Multiphase flow evaluation by CAT and RAT modules which are part of toolstring.
- Rigid toolstring designed for horizontal wells logging.

TOOL SPECIFICATIONS	
Temp probe type	Platinum, Exposed
Precision	0.001C
Response time	0.25 sec
SC-SNL in toolstring	Yes
GR	Yes
CCL	Yes
Pressure	Yes
CAT & RAT modules	Yes
Calliper	Yes
Accelerometer	Yes
Tool OD	1.65 in (42mm)
Tool length	3.5 m
Maximum Operating Temperature	150 C
Maximum Operating Pressure	14,500 PSI (100 MPa)
Connections	15/16 SR
Fully autonomous tool	Yes



### RESERVOIR PERFORMANCE EVALUATION. OH PRODUCER



### RESERVOIR PERFORMANCE EVALUATION. OP WITH PDL

