



**NORTH
SIDE**

**SPINNERLESS
PRODUCTION PROFILING**

**HORIZONTAL PRODUCERS
BY ARRAY CAT AND TAT TECHNOLOGY**

SPINNERLESS PRODUCTION PROFILING HORIZONTAL OIL PRODUCERS

Array Spinnerless Production Profiling Technology is based on High Accuracy Array Temperature Tool with resolution of exposed to the environment six temperature probes of not less than 0.001 C and response time not less than 0.25 sec.

Temperature Array Tool (TAT) allows to capture smallest reservoir-related disturbance of the temperature field inside the horizontal section of the well and construct a quantitative reservoir-related production profile.

Technology application:

- 360° Spinnerless quantification of production profile in horizontal section of the well.
- Reservoir related production profile from six array high resolution and fast response temperature probes.
- Applicable for cased hole, liner and open hole wells.

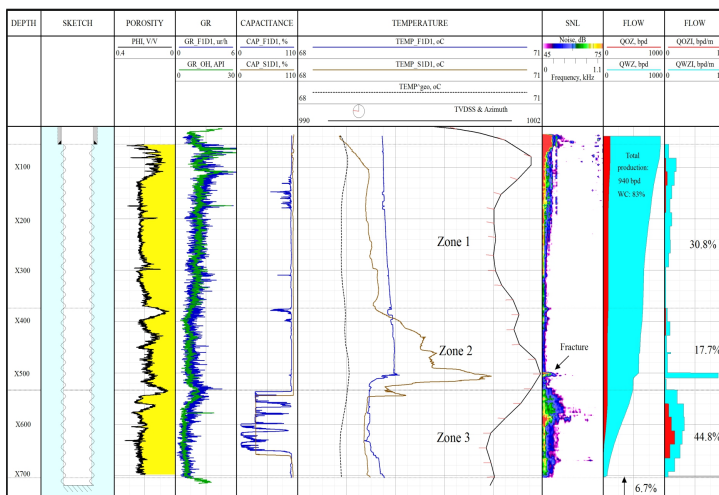
Technology advantages:

- Data acquisition assurance since no rotating parts in toolstring.
- No limitation to the flow rate. Low rate wells application.
- Multiphase flow evaluation by CAT and RAT modules which are part of toolstring.
- Rigid toolstring designed for horizontal wells logging.



Specs	Value
Array TAT tool sensitivity, C	0.001
Temp probes response time, sec	0.25
TAT probes type	Platinum
Temperature rating, C	150
Pressure rating, PSI	14,500
SC-SNL in toolstring	Yes
GR	Yes
CCL	Yes
Pressure	Yes
Capacitance Array Tool	Yes
Resistivity Array Tool	Yes
Build-In Calliper tool	Yes
Length, m	3.5

RESERVOIR PERFORMANCE EVALUATION. OH PRODUCER



RESERVOIR PERFORMANCE EVALUATION. OP WITH PDL

